



# Rattan 2025



**Sika·Design®**  
HANDMADE FURNITURE

# SIKA-DESIGN

## A PROUD TRADITION OF CRAFTSMANSHIP

Sika-Design is a Danish family company from 1942. With a passion for rattan and great craftsmanship, we manufacture timeless furniture in both our own designs, and in designs by some of the world's greatest designers and architects.

We are proud to call us the oldest manufacturer of rattan and wicker furniture in Scandinavia. With 3<sup>rd</sup> generation Louise Andreasen in charge, it is our mission to make long lasting furniture both when it comes to design and durability.

### Creating long lasting furniture

We strive to manufacture long lasting furniture, created with the least possible impact on the environment. This places great demands to the longevity of our designs, the way we produce, and the materials we use.

Rattan meets these high requirements. The material is solid which makes rattan furniture very durable and able to be passed down for generations. Rattan production has a minimal impact on the environment, as the material is fast growing, harvested and processed by hand, and when steamed shortly it can also be bend by hand. In the production there is no waste as all residues are used for the steam ovens.

### Social & environmental responsibilities

Taking environmental and social responsibilities are ongoing processes that we have been working with systematically since 2013. Together with our sister company, we were the first furniture companies in Denmark to be certified with an ISO14001:2015 and SA8000 (now replaced by SMETA by DNV-GL). Through our certifications, we have committed ourselves to a responsible social - and environmental policy as well as an ongoing focus on developing and improving these conditions.



# Rattan

## PROCESSING & MANUFACTURING

According to the Indonesian people, rattan is hugging the rainforest. This is meant both literally as rattan grows like lianas around the trees but also figuratively speaking, because the use of rattan help preserving the rainforest as there is no rattan production without the rainforest.

80% of the world's rattan resources grow in the Indonesian rain forest. Rattan is fast growing and regenerates in the span of 5-7 years. In nature, rattan absorbs CO2 and produces up to 35% more oxygen than a tree. Rattan comes in 600 different variants and from these 40 can be used in the production of furniture. At Sika-Design we only use the two best qualities called Tohiti and Manau.

Making rattan furniture is extensive work that requires many skilled hands. The process already begins in the rainforest where experienced harvesters assess which lianas are mature enough to be cut down.

### Processing of rattan

Our rattan grows in the Indonesian rainforest where it is harvested by hand. Before processing, rattan appears with sharp thorns which are scraped off before the lianas are tied up and taken back to the village.

In the village the rattan is classified based on type and size. The rattan lianas are cleaned in water, and dried under the sun. The big rattan is dried in upright position to get rid of the water more easily while small rattan is dried lying on the ground. From here, the lianas are delivered to the manufacturing facilities.





## Manufacturing of rattan furniture

Rattan is solid, in opposition to hollow bamboo, and is therefore bendable. When steamed for 10-15 minutes, rattan can be formed by hand using old traditional manufacturing techniques and a few simple tools. In our rattan production there is no waste, as all residues can be used as fuel for the steam ovens.

Our most detailed furniture, such as the Rossini chair and Carlo bar trolley, are so advanced that only a limited number of our craftsmen are able to make these. Other pieces require great patience like our Hanging Egg chair, which takes one person, one week to make.

# 3 generations

## WITH A PASSION FOR RATTAN

Sika-Design is a true family company with 3<sup>rd</sup> generation, Louise Andreasen, in charge. The story of Sika-Design began in 1942 when Ankjær Andreasen produced the first batch of smaller interior items made of rush and willow, and since then the family have continued his legacy.

Knud Andreasen, Ankjær Andreasen's son, took over the company in 1983, and Ankjær continued his daily inspections until his death in 1997. Since 1996 Louise and Knud have worked side by side bringing Sika-Design into the new century with great designs, while never letting go of our strong heritage of great craftsmanship.

In 2013 Louise Andreasen took over the company and became CEO of Sika-Design. Knud is still working in the company and is an important asset, as he is continuingly passing on the Sika-Design company culture and heritage to the next generations.



**Louise Andreasen**  
(1971-)



**Knud Andreasen**  
(1948-)



**Ankjær Andreasen**  
(1911-1997)









# Iconic designs

DESIGNED BY  
INNOVATIVE PIONEERS

In our ICONS collection we present a unique selection of rattan furniture designed by some of the world's greatest designers and architects. These include living as well as older iconic creators with a shared passion for rattan and the common trait of being pioneers of their time.





# Arne Jacobsen

Arne Jacobsen (1902-1971) was revered as one of the most visionary and progressive Danish architects of his time. Arne Jacobsen was admitted to the Architecture School at the Royal Danish Academy of Fine Arts from 1924 to 1927. Still a student in 1925, he participated in the Paris Art Deco fair, Exposition Internationale des Arts Décoratifs et Industriels Modernes, where he won a silver medal for his first furniture design.

In 1929 Arne Jacobsen won a Danish Architect's Association competition for designing the famous "House of the Future" where the Paris lounge chair was displayed as a part of the interior design.



1929

PARIS CHAIR



1936

CHARLOTTENBORG  
CHAIR



1937

CHARLOTTENBORG  
SOFA



1937

CHARLOTTENBORG  
TABLE

# Charlottenborg

BY ARNE JACOBSEN

The Charlottenborg lounge chair was designed by Arne Jacobsen in 1936. The lounge chair was showcased for the first time at the Charlottenborg spring exhibition in 1937, and since then named after the castle. The chair was originally named A.J 237 and was part of a series of original rattan chairs.

The Charlottenborg chair was one of Arne Jacobsen's own favorite lounge chairs and part of the interior design in his famous vacation home 'Knarken' built in 1938. In the iconic Charlottenborg series you can also find a 2-seater sofa and a coffee table.









# Michel Buffet

Michel Buffet (1931-2024) was a French designer who began designing while still a student in the 1950s. Buffet was inspired by the works of pioneering French modernists and with a degree in engineering and architecture, Michel Buffet created his first furniture in 1954. Later the same year Buffet presented the chair at Festival de la creation française organized by Galeries Lafayette.

As a lover of art and the beauty of nature, Michel Buffet combines the world of industrial design with the world of decorators and is internationally recognized as one of the great classic designers.



1954

PACIFIQUE CHAIR







# Yuzuru Yamakawa

Yuzuru Yamakawa (1933-2012) was a famous Japanese designer known for his great passion for rattan. Yamakawa designed and worked with rattan for more than 40 years, and his designs are known for both their beautiful lines and their emphasis on ergonomics.

Yamakawa was ambitious, in his work he merged the elegant lines from Japan with the traditional craftsmanship of Indonesia. His amazing work created a new more exclusive era for rattan furniture.



1996

RAP CHAIR



1996

FUNKY CHAIR



1996

FUNKY TABLE



1998

YAMAKAWA  
LAMPSHADES









Yamakawa Lampshades | Item no: YW-125H & YW-75H





# Jin Kuramoto

Jin Kuramoto (1976-) is a Japanese designer who graduated from Kanazawa College of Art in 1999. Despite his young age, Kuramoto has already received international recognition and numerous awards including the Red Dot Award, Good Design award and the iF Product Design Award.

With an experimental approach to design, and a great respect for the unique inherent properties of each material, Kuramoto tells a story through each of his designs ranging from automobiles, eyewear and furniture.



2020

MACHIYA  
STOOL



2020

MACHIYA  
BENCH



2024

KOU  
LAMP SHADE



2024

TOMOS  
LAMP SHADE



2024

TOMORI  
LAMP SHADE







# Machiya

BY JIN KURAMOTO

Inspired by the traditional wooden townhouses found all over Japan, Jin Kuramoto have designed the Machiya Stool and Machiya Bench. These townhouses, called Machiya, are especially known by their wooden lattices on the facade and these characteristic lines you will also find in our Machiya furniture.



# Nanna & Jørgen Ditzel

Nanna Ditzel (1923-2005) was an internationally recognized Danish designer. Together with her husband Jørgen Ditzel (1921-1961), their first furniture designs were exhibited while still students at the Arts and Crafts School in Copenhagen.

They quickly established their own design studio and started to work with wicker in the renowned workshop founded by the famous wicker worker Robert W. in 1950. Ditzel's experimental approach to materials resulted in multiple innovative furniture made of rattan. Most known is their Hanging Egg chair that has enjoyed praise worldwide ever since the distinctive sculptural shape was created by Nanna & Jørgen Ditzel in 1959.



1951  
MADAME CHAIR



1951  
RANA CHAIR



1959  
HANGING EGG  
CHAIR



1961  
CHILL CHAIR



1969  
NANNY ROCKING  
CHAIR





Chill Chair | Item no: ND-20-CU

# Chill & Rana

BY NANNA & JØRGEN DITZEL

The Chill lounge chair was designed by Nanna Ditzel in the late summer of 1961 and was the first piece of furniture Nanna Ditzel created after her husband's death earlier same year. The chair combines an organic design language with minimalistic features, and visibly continues the innovative design aesthetic that also characterized the couple's furniture. Nanna & Jørgen Ditzel experimented with designs based on a cohesive body where seat and frame were united, and these experiments resulted in the three-legged Rana wicker chair designed in 1951.



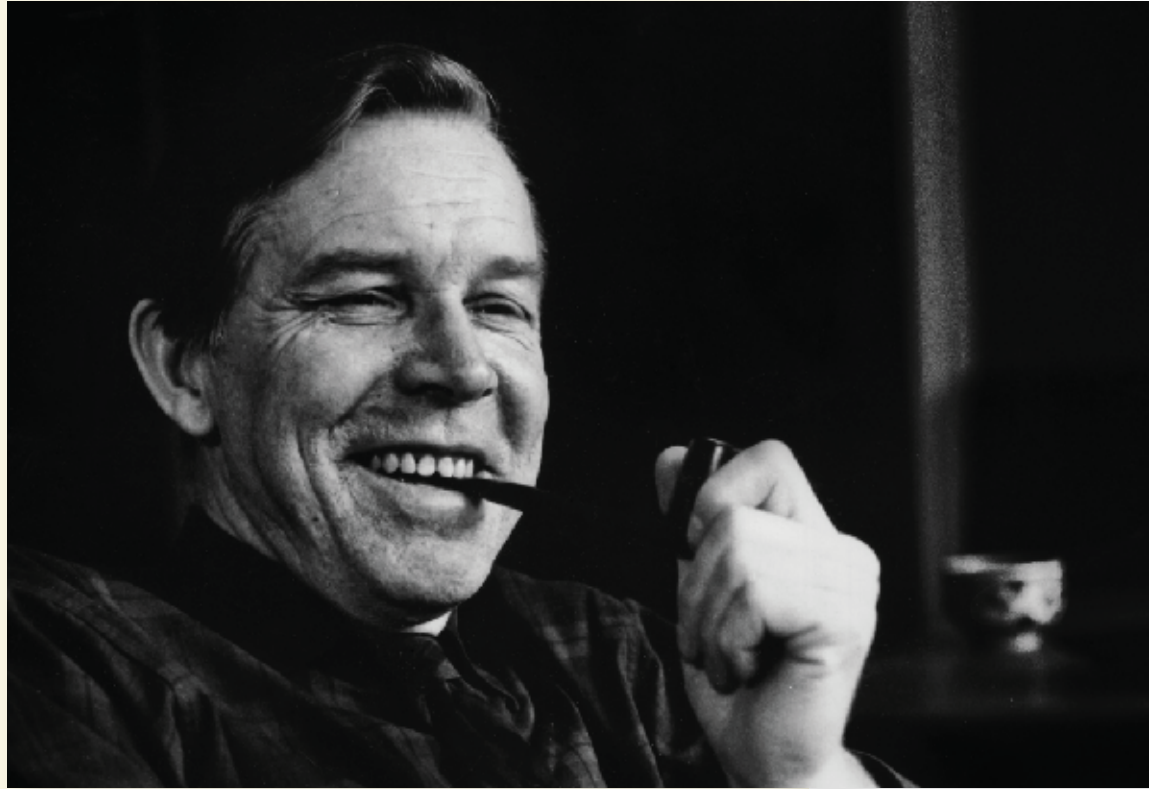


Madame Chair | Item no: ND-14-CU









# Viggo Boesen

Viggo Boesen (1907-1985) was a Danish architect who contributed to the Danish design aesthetics in the 1930s. From his workshop, Viggo designed several rattan and upholstery furniture. All his furniture was designed according to his philosophy: Furniture should have an organic flow and embrace the body smoothly and tenderly. They should be a delight to the eye, but also be solid and durable.

The Fox chair was the first of many furniture pieces from Viggo Boesen and with that he won the design competition held by the Danish wicker-maker guild in 1936. His inspiring, imaginative designs made him unique and put him among the designers of the “Danish Golden Age.”



1936

FOX CHAIR



1936

TEDDY CHAIR



1936

TEDDY FOOTSTOOL





# Teddy

BY VIGGO BOESEN

The Teddy lounge chair was designed by Viggo Boesen in 1936. The name of the lounge chair both refers to the appearance of the chair as well as the feeling when leaning back into the embracing chair. In the same iconic design, you find the matching Teddy footstool. The footstool completes the lounge chair and adds extra comfort.

Customized cushions specifically developed for the Teddy furniture are available in a selection of colors.



# Tove Kindt-Larsen

Tove Kindt-Larsen (1906-1994) was one of Denmark's most prominent designers from the 1930s to the 1960s. Tove was trained at the Royal Danish Academy of Fine Arts in Copenhagen and had a high sense of quality and an appreciation of current trends.

Many of Tove Kindt-Larsen's designs were inspired by shapes found in nature, and she is especially known for her work within architecture, silverware, textiles, and for the pioneering work she did with rattan.



1936  
TULIP CHAIR



1936  
TULIP SOFA



1937  
SWING CHAIR



1937  
SWING SOFA



# Swing

BY TOVE KINDT-LARSEN

The Swing lounge chair and sofa was designed by Tove Kindt-Larsen in 1937. This year, Tove Kindt-Larsen won the first prize in the Cabinetmakers Guild competition, and later the same year she won the third prize at the Danish Reeds Guild competition for the Swing lounge chair.









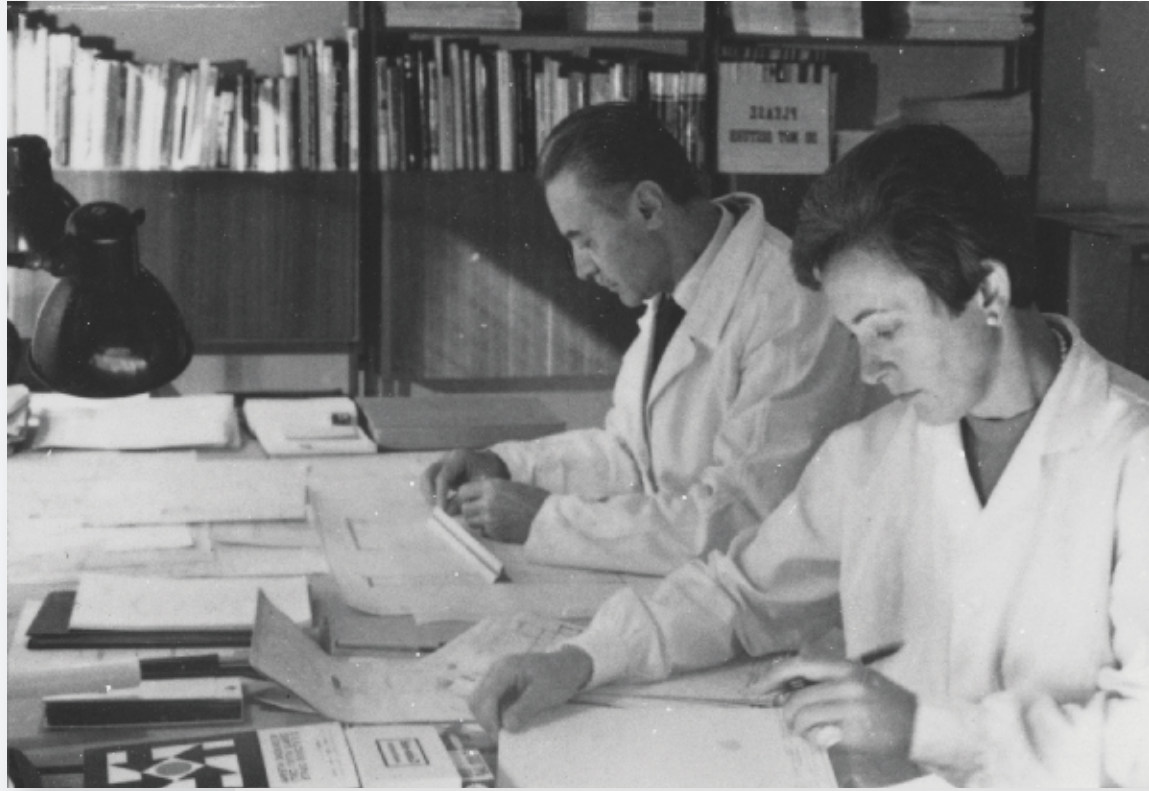


# Tulip

BY TOVE KINDT-LARSEN

The Tulip lounge chair and Tulip sofa was designed by Tove Kindt-Larsen in 1936 and was originally made in Robert W's famous workshop. In the Tulip furniture, she has perfectly mastered to unify comfort, craftsmanship and timelessness. The feminine look, and the fact that the design is still relevant more than 70 years later, is a great example of the talent Tove had for furniture design.





# Franco Albini & Franca Helg

Franco Albini (1905-1977) was an Italian architect and designer, famous for his ability to merge modern minimalistic furniture design with traditional Italian craftsmanship. Through his work he obtained three Compasso D'Oro awards, the most prestigious Italian design prize.

From 1951 Franco Albini becomes business partners with Franca Helg (1920-1989), and from this point Franca plays a crucial role in numerous of Franco Albini's designs. Franco and Franca were active both in the field of furniture, architectural planning and in industrial design. Together they designed many creations with the new forms of modernism.



1951

BELLADONNA  
SOFA



1951

OTTOMANS



1951

FRATELLINO  
TROLLEY



1967

LUNA CHAIR



1950s

BISTRO CHAIR





# Belladonna

BY FRANCO ALBINI &  
FRANCA HELG

In 1951 the Italian duo Franco Albini & Franca Helg designed the Belladonna sofa. The construction of the sofa makes it seem like the seat is placed on a pedestal, giving the sofa an almost majestic aura. The beautifully curved back and fine open weave further enhances this elegant expression.



Luna Chair | Item no: FA-45-SU





# Robert W.

Robert W. (1825-1902) was known as the best wicker maker in Denmark and was appointed royal court purveyor. Many architects came to his workshop to get knowhow and understanding about weaving and wickerwork. Among those were Danish architects Arne Jacobsen, Viggo Boesen, Nanna & Jørgen Ditzel and Kay Bojesen. They all had prototypes made in Robert's workshop in Copenhagen.

Robert W. was a pioneer in rattan production. What he did to the craftsmanship and the way he challenged the material lays the groundwork for the way we know rattan furniture today.



1901

ROBERT CHAIR





# Original designs

DESIGNED BY  
3 GENERATIONS

In our Originals collection we present furniture in our own original designs. These have been created across Sika-Designs three family generations. Many of the models in this collection date back to our early beginning in the 1950s, where some have been in our range ever since. Each year we still add new models to the collection, and these are often inspired by drawings found in our archives.





# Monet

BY SIKA-DESIGN

The Monet lounge chair was designed in 2005 by Sika-Designs 3<sup>rd</sup> generation Louise Andreasen. The lounge chair is inspired by drawings made by 1<sup>st</sup> generation Ankjær Andreasen, found in our archives dating back to the 1960s.













Rossini Chair & Tony Table | Item no: 1006U & 4007U-P9080



MalouMirror | Item no: ATM011U







Monet Rocking Chair & Romeo Trolley | Item no: 1081A & 4025A







Bella Stool | Item no: 1008A









Natalia Headboard | Item no: 5181U











# Rossini

The Rossini chair was designed in 1993 and has been in our collection since then. The chair is designed in a collaboration between Knud Andreasen, the 2<sup>nd</sup> generation in Sika-Design, and the famous Japanese designer Yamakawa. The Rossini chair is our all-time most popular chair and can very well be named our signature chair.

Romantica Chair & Tony Table | Item no: 1015A & 4007A-P9080











Celia Headboard | Item no: 5183U









# Donatello

BY SIKA-DESIGN

Our Donatello furniture was designed by Louise Andreasen, 3<sup>rd</sup> generation at Sika-Design, in 2007. The shape was inspired by old drawings of a fully woven sofa, that has been transformed into a more open design with the beautiful details that rattan enables. In this beautiful design, you find a lounge chair, a 2-seater sofa, a 3-seater sofa, and a side table.



DONATELLO TABLE | 4089A  
GLAS TABLE TOP | P9030



DONATELLO CHAIR | 1086A



DONATELLO 2-SEATER | 2086A



DONATELLO 3-SEATER | 3086A





Figura Floor Lampshades | Item no: ATLO31U, ATLO32U & ATLO33U



# Renoir

BY SIKA-DESIGN

The Renoir swing was designed by Sika-Designs founder, Ankjær Andreasen, in 1956. The hanging chair is both the perfect place to relax and read a good book. Its playful form offers an idyllic spot in which to curl up and relax, as you sway softly in the swing.





Rasmus Mirror | Item no: 5075A







Charles Stool & Counter Stool | Item no: 1053D & 1054D



Carlo Trolley & Luella Mirror | Item no: 4027A & FA-70-PU











# Parisian vibes

Our Affaire collection presents a selection of charming bistro and café furniture in our own classical designs. Our inspiration is found in the cozy Parisian atmosphere, and the colorful rattan chairs seen at bistros and sidewalk cafés all over Paris.



Isabell Bar Stool & Lyon Bar Table | Item no: 9178CPWH & PVØ70B-BASE6



Madeleine Chair & Lyon Café Table | Item no: 9187CIVCP & PVØ70B-BASE3









Simone Stool, Counter Stool & Bar Stool | Item no: 9182SIVHN, 9183SIVHN & 9184SIVHN



Isabell Armchair | Item no: 9181CIVGR & 9181CIVHN









# Projects & 3D

To give our customers the best experience and options while planning a project, we have our full assortment available as 3D models. These models can be used in most interior design software and will give a high-end visualization of a project.

We love to see our furniture in new surroundings and are proud to see our designs in projects all over the world. On our website you can find a selection of inspiring projects done by our customers.



Davinci Chair | Domaine de Raba - Talence, France | Photo Credit: Gaëlle Le Boulicaut





# Downloads

On our website you can access our Downloadcenter. In here, you have access to high-resolution images, manuals, datasheets, 3D files and much more. A login is not required.

## Images in high resolution

Images of all products both packshots and lifestyle can be found in high resolution. Packshots with shadows can also be found in web-format.

## 3D Files

Our 3D models are available for download at our website in OBJ, DWG, STP & SKP formats, and can be made in other formats on request.

## Datasheets

We have datasheets available for all furniture models. The datasheets contain relevant information about the furniture, and are available as PDF.

## Fabric color & styles

Fabric styles and colors are available as downloads in our Downloadcenter. They are divided into indoor and outdoor collections.

## Color & material sheets

For each collection we have a sheet with a color and material overview. They are available as high resolution PDF's and are easy to print.

## E-Catalogues

Catalogues are available on our website as iPapers. They are also available as PDF's in Downloadcenter and can be downloaded in high and low resolution.







**Arne Jacobsen**

(1902-1971)



**Tove Kindt-Larsen**

(1906-1994)



**Nanna Ditzel**

(1923-2005)



**Yuzuru Yamakawa**

(1933-2012)



**Robert W.**

(1825-1902)



**Franco Albini**

(1905-1977)



**Viggo Boesen**

(1907-1985)



**Michel Buffet**

(1931-2024)



**Jin Kuramoto**

(1976-)

# Our iconic designers

At Sika-Design we are very proud to collaborate with some of the world's greatest architects and designers.

These include current as well as older iconic architects and designers with the common trait of being pioneers of their time. They all share a fascination of rattan and the endless and uncompromising possibilities that rattan's strength and flexibility enables. We share this fascination and when acquiring rights for old iconic designs it is important for us to work closely with the descendants to ensure the design and quality of the furniture, so they can continue their entitlement in the design world.



PARIS CHAIR | AJ-11-PU  
By Arne Jacobsen  
W68 D105 H83 SH34 AH52  
26.8" 41.4" 32.7" 13.4" 20.5"



CHARLOTTENBORG CHAIR | AJ-25-PU  
By Arne Jacobsen  
W73 D80 H74 SH40 AH54  
28.8" 31.5" 29.2" 15.8" 21.3"



CHARLOTTENBORG 2 SEATER | AJ-35-PU  
By Arne Jacobsen  
L137 D80 H73 SH40 AH54  
54" 31.5" 28.8" 15.8" 21.3"



CHARLOTTENBORG TABLE | AJ-45-PU  
By Arne Jacobsen  
W 69 D69 H50  
27.2" 27.2" 19.7"



LUNA CHAIR | FA-45-SU  
By Franco Albini & Franca Helg  
W102 D76 H101 SH54  
40.2" 30" 39.8" 21.3"



BELLADONNA SOFA | FA-95-PU  
By Franco Albini & Franca Helg  
L191 D75 H81 SH45  
75.2" 29.6" 31.9" 17.8"



OTTOMAN BIG | FA-65-SU  
By Franco Albini & Franca Helg  
W65 D65 H40  
25.6" 25.6" 15.8"



OTTOMAN SMALL | FA-55-SU  
By Franco Albini & Franca Helg  
W55 D55 H35  
21.7" 21.7" 13.8"



FOX CHAIR | VB-11-PU  
By Viggo Boesen  
W80 D84 H68 SH34  
31.5" 33.1" 26.8" 13.4"



TEDDY CHAIR | VB-17-PU  
By Viggo Boesen  
W83 D100 H88 SH33 AH52  
32.7" 39.4" 34.7" 13" 20.5"



TEDDY FOOTSTOOL | VB-18-PU  
By Viggo Boesen  
W50 D50 H32  
19.7" 19.7" 12.6"



FRATELLINO TROLLEY | FA-23-PU  
By Franco Albini & Franca Helg  
W58 D58 H73  
22.9" 22.9" 28.8"



LUELLA MIRROR | FA-70-PU  
By Franco Albini & Franca Helg  
W57 D4 H68  
22.5" 1.6" 26.8"



KOU LAMP SHADE | JK-28-CU  
By Jin Kuramoto  
W28 D28 H50  
11.1" 11.1" 19.7"



TOMOS LAMP SHADE | JK-35-CU  
By Jin Kuramoto  
W35 D35 H35  
13.8" 13.8" 13.8"



TOMORI LAMP SHADE | JK-50-CU  
By Jin Kuramoto  
W50 D50 H50  
19.7" 19.7" 19.7"



MACHIYA BENCH | JK-25-PU  
By Jin Kuramoto  
L120 D43 H44  
47.3" 17" 17.4"



MACHIYA STOOL | JK-15-PU  
By Jin Kuramoto  
W53 D43 H44  
20.9" 17" 17.4"



TULIP 3-SEATER | KL-30-PU  
By Tove Kindt-Larsen  
L160 D78 H82 SH44 AH57  
63" 30.8" 32.3" 17.4" 22.5"



TULIP CHAIR | KL-10-PU  
By Tove Kindt-Larsen  
W63 D78 H82 SH44 AH54  
24.9" 30.8" 32.3" 17.4" 22.5"



SWING 2-SEATER | KL-26-PU  
By Tove Kindt-Larsen  
L140 D70 H71 SH38 AH60  
55.2" 27.6" 28" 15" 23.7"



SWING CHAIR | KL-16-PU  
By Tove Kindt-Larsen  
W64 D70 H71 SH38 AH60  
25.2" 27.6" 28" 15" 23.7"



ROBERT CHAIR | WG-12-PU  
By Robert W.

W62 D60 H81 SH45  
24.5" 23.7" 31.9" 17.8"



NANNY ROCKING CHAIR | ND-15-PU  
By Nanna Ditzel

W66 D100 H97 SH42  
26" 39.4" 38.2" 16.6"



STAND - HANGING EGG | 9999-9997  
By Nanna & Jørgen Ditzel

W105 D105 H205  
41.4" 41.4" 80.8"



HANGING EGG CHAIR | ND-75-CU  
By Nanna & Jørgen Ditzel

W85 D72 H120 SH45  
33.5" 28.4" 47.3" 17.8"



HANGING EGG JUNIOR | ND-55-CU  
By Nanna & Jørgen Ditzel

W68 D57.5 H96  
26.8" 22.7" 37.8"



MADAME CHAIR | ND-14-CU  
By Nanna & Jørgen Ditzel

W85 D77 H77 SH43 AH59  
33.5" 30.4" 30.4" 17" 23.3"



RANA CHAIR | ND-13-CU  
By Nanna & Jørgen Ditzel

W75 D82 H74 SH35  
29.6" 32.3" 29.2" 13.8"



CHILL CHAIR | ND-20-CU  
By Nanna Ditzel

W69 D75 H56 SH33  
27.2" 29.6" 22.1" 13"



PACIFIQUE CHAIR | MB-19-CU  
By Michel Buffet

W89 D99 H91 SH39 AH53  
35.1" 39" 35.9" 15.4" 20.9"



RAP CHAIR | YW-1091H  
By Yuzuru Yamakawa

W58 D53 H81 SH45 AH65  
22.9" 20.9" 31.9" 17.8" 25.6"



FUNKY CHAIR | YW-1090H  
By Yuzuru Yamakawa

W58 D55 H83 SH45 AH63  
22.9" 21.7" 32.7" 17.8" 24.9"



FUNKY CAFÉ TABLE | YW-4090H  
By Yuzuru Yamakawa

W70 D70 H70  
27.6" 27.6" 27.6"



YAMAKAWA LAMP SHADE | YW-125H  
By Yuzuru Yamakawa

W32 D32 H125  
12.6" 12.6" 49.3"



YAMAKAWA LAMP SHADE | YW-75H  
By Yuzuru Yamakawa

W32 D32 H75  
12.6" 12.6" 29.6"



ROBERT CHAIR | WG-12-PA  
By Robert W.

W62 D60 H81 SH45  
24.5" 23.7" 31.9" 17.8"



FOX CHAIR | VB-11-PA  
By Viggo Boesen

W80 D84 H68 SH34  
31.5" 33.1" 26.8" 13.4"



OTTOMAN BIG | FA-65-PA  
By Franco Albini & Franca Helg

W65 D65 H40  
25.6" 25.6" 15.8"



OTTOMAN SMALL | FA-55-PA  
By Franco Albini & Franca Helg

W55 D55 H35  
21.7" 21.7" 13.8"



ROSSINI ARMCHAIR | 1007U  
W56 D58 H93 SH45 AH65  
22.1" 22.9" 36.7" 17.8" 25.6"  
☒ ☐



ROSSINI SIDE CHAIR | 1006U  
W49 D58 H93 SH45  
19.3" 22.9" 36.7" 17.8"  
☐



ALANIS CHAIR | 1057U  
W51 D61 H89 SH45  
20.1" 24.1" 35.1" 17.8"  
☒



MARGRET CHAIR | 1003U  
W56 D64 H90 SH45 AH65  
22.1" 25.2" 35.5" 17.8" 25.6"  
☒ ☐



ROMANTICA CHAIR | 1015U  
W57 D61 H100 SH45 AH65  
22.5" 24.1" 39.4" 17.8" 25.6"  
☐



DAVINCI CHAIR | 1005U  
W58 D66 H97 SH50 AH67  
22.9" 26" 38.2" 19.7" 26.4"  
☐



MONET ROCKING CHAIR | 1081U  
W65 D99 H93 SH45 AH60  
25.6" 39" 36.7" 17.8" 23.7"  
☐



CLASSIC CHAIR | 1072U  
W67 D61 H82 SH46 AH69  
26.4" 24.1" 32.3" 18.2" 27.2"  
☐



MONET CHAIR | 1082U  
W63 D76 H98 SH40 AH56  
24.9" 30" 38.6" 15.8" 22.1"  
☒ ☐



MONET FOOTSTOOL | 1084U  
W53 D42 H40  
20.9" 16.6" 15.8"  
☐



RENOIR SWING | 3080U  
W76 D67 H113  
30" 26.4" 44.5"  
☐



TONY CAFÉ TABLE | 4007U  
W80 D80 H70  
31.5" 31.5" 27.6"  
GLAS TABLE TOP | P9080



TONY SIDE TABLE | 4005U  
W60 D60 H60  
23.7" 23.7" 23.7"  
GLAS TABLE TOP | P9060



ROMEO TROLLEY | 4025U  
W50 D50 H72  
19.7" 19.7" 28.4"



TANGELO XS | ATL001U  
Lampshade  
W24 D24 H19  
9.5" 9.5" 7.5"



TANGELO S | ATL002U  
Lampshade  
W37 D37 H26  
14.6" 14.6" 10.3"



TANGELO M | ATL003U  
Lampshade  
W49 D49 H34  
19.3" 19.3" 13.4"



TANGELO L | ATL004U  
Lampshade  
W62 D62 H41  
24.5" 24.5" 16.2"



SHOWROOM | ATL008U  
Lampshade  
W70 D70 H70  
27.6" 27.6" 27.6"



BELLA STOOL | 1008U  
W34 D34 H45  
13.4" 13.4" 17.8"



MARCHE BASKET | 4444U  
W60 D40 H30  
23.7" 15.8" 11.9"  
☒



FIGURA SMALL | ATL031U  
Floor lampshade  
W30 D30 H35  
11.9" 11.9" 13.8"



FIGURA MEDIUM | ATL032U  
Floor lampshade  
W40 D40 H45  
15.8" 15.8" 17.8"



FIGURA LARGE | ATL033U  
Floor lampshade  
W50 D50 H55  
19.7" 19.7" 21.7"



CAROLINE 3-SEATER | 3026U

L197 D80 H81 SH42 AH60  
77.6" 31.5" 31.9" 16.6" 23.7"



CAROLINE CHAIR | 1026U

W70 D80 H81 SH42 AH60  
27.6" 31.5" 31.9" 16.6" 23.7"



DONATELLO TABLE | 4089U

W60 D60 H54  
23.7" 23.7" 21.3"

GLAS TABLE TOP | P9030



MICHELANGELO DAYBED | 1025U

L162 D62 H77 SH13  
24.5" 63.8" 30.4" 5.2"



NATALIA HEADBOARD | 5181U

W180 D3.5 H206  
70.9" 1.4" 81.2"



CELIA HEADBOARD | 5183U

W180 D3.5 H167  
70.9" 1.4" 65.8"



RASMUS MIRROR | 5075U

W78 D3 H172  
30.8" 1.2" 67.8"



ELLA MIRRORS | 5040U, 5045U,  
5050U

W40 D40 | W45 D45 | W50 D50  
15.8" 15.8" | 17.8" 17.8" | 19.7" 19.7"



MALOU MIRROR | ATM011U

W55 D4 H70  
21.7" 1.6" 27.6"



RENOIR SWING | 3080T

W76 D67 H113  
30" 26.4" 44.5"



ROSSINI ARMCHAIR | 1007T

W56 D58 H93 SH45 AH65  
22.1" 22.9" 36.7" 17.8" 25.6"



ROSSINI SIDE CHAIR | 1006T

W49 D58 H93 SH45  
19.3" 22.9" 36.7" 17.8"



PIANO CHAIR | 1012T

W51 D61 H93 SH45 AH65  
20.1" 24.1" 36.7" 17.8" 25.6"



MONET CHAIR | 1082T

W63 D76 H98 SH40 AH56  
24.9" 30" 38.6" 15.8" 22.1"



MONET FOOTSTOOL | 1084T

W53 D42 H40  
20.9" 16.6" 15.8"



ROSSINI ARMCHAIR | 1007S

W56 D58 H93 SH45 AH65  
22.1" 22.9" 36.7" 17.8" 25.6"



PIANO CHAIR | 1012S

W51 D61 H93 SH45 AH65  
20.1" 24.1" 36.7" 17.8" 25.6"



DAVINCI CHAIR | 1005U

W58 D66 H97 SH50 AH67  
22.9" 26" 38.2" 19.7" 26.4"



MONET CHAIR | 1082S

W63 D76 H98 SH40 AH56  
24.9" 30" 38.6" 15.8" 22.1"



MONET FOOTSTOOL | 1084S

W53 D42 H40  
19.3" 22.9" 36.7" 17.8"



ROSSINI ARMCHAIR | 1007C

W56 D58 H93 SH45 AH65  
22.1" 22.9" 36.7" 17.8" 25.6"



ROSSINI SIDE CHAIR | 1006C

W49 D58 H93 SH45  
19.3" 22.9" 36.7" 17.8"





ROSSINI ARMCHAIR | 1007A  
W56 D58 H93 SH45 AH65  
22.1" 22.9" 36.7" 17.8" 25.6"  
☒ □



ROSSINI SIDE CHAIR | 1006A  
W49 D58 H93 SH45  
19.3" 22.9" 36.7" 17.8"  
□



ROMANTICA CHAIR | 1015A  
W57 D61 H100 SH45 AH65  
22.5" 24.1" 39.4" 17.8" 25.6"  
□



DAVINCI CHAIR | 1005A  
W58 D66 H97 SH50 AH67  
22.9" 26" 38.2" 19.7" 26.4"  
□



PIANO CHAIR | 1012A  
W51 D61 H93 SH45 AH65  
20.1" 24.1" 36.7" 17.8" 25.6"  
□



LULU CHAIR | 1045A  
W42 D53 H88 SH46  
16.6" 20.9" 34.7" 18.2"  
□



MONET ROCKING CHAIR | 1081A  
W65 D99 H93 SH45 AH60  
25.6" 39" 36.7" 17.8" 23.7"  
□



MONET CHAIR | 1082A  
W63 D76 H98 SH40 AH56  
24.9" 30" 38.6" 15.8" 22.1"  
☒ □



MONET FOOTSTOOL | 1084A  
W53 D42 H40  
20.9" 16.6" 15.8"  
□



MARCHE BASKET | 4444A  
W60 D40 H30  
23.7" 15.8" 11.9"  
☒



MELODY ARMCHAIR | 1068A  
W54 D60 H97 SH50 AH63  
21.3" 23.7" 38.2" 19.7" 24.9"  
□



MELODY CHAIR | 1067A  
W51 D60 H97 SH50  
20.1" 23.7" 38.2" 19.7"  
□



TONY CAFÉ TABLE | 4007A  
W80 D80 H70  
31.5" 31.5" 27.6"  
GLAS TABLE TOP | P9080



TONY SIDE TABLE | 4005A  
W60 D60 H60  
23.7" 23.7" 23.7"  
GLAS TABLE TOP | P9060



MICHELANGELO DAYBED | 1025A  
L162 D62 H77 SH13  
24.5" 63.8" 30.4" 5.2"  
☒ □



BLUES COUNTER STOOL | 1013A  
W52 D63 H98 SH63 AH81  
20.5" 24.9" 38.6" 24.9" 31.9"  
□



SALSA BAR STOOL | 1016A  
W46 D40 H79  
18.2" 15.8" 31.2"  
□



CARLO TROLLEY | 4027A  
W89 D45 H82  
35.1" 17.8" 32.3"  
□



ROMEO TROLLEY | 4025A  
W50 D50 H72  
19.7" 19.7" 28.4"  
□



BELLA STOOL | 1008A  
W34 D34 H45  
13.4" 13.4" 17.8"  
□



NATALIA HEADBOARD | 5181A  
W180 D3,5 H206  
70.9" 1.4" 81.2"  
□



CELIA HEADBOARD | 5183A  
W180 D3,5 H167  
70.9" 1.4" 65.8"  
□



RASMUS MIRROR | 5075A  
W78 D3 H172  
30.8" 1.2" 67.8"  
□



RENOIR SWING | 3080A  
W76 D67 H113  
30" 26.4" 44.5"  
□



DONATELLO 3-SEATER | 3086A

L215 D70 H78 SH47  
84.7" 27.6" 30.8" 18.6"



DONATELLO 2-SEATER | 2086A

L145 D72 H78 SH47  
57.1" 28.4" 30.8" 18.6"



DONATELLO CHAIR | 1086A

W74 D70 H78 SH47  
29.2" 27.6" 30.8" 18.6"



DONATELLO TABLE | 4089A

W60 D60 H54  
23.7" 23.7" 21.3"

GLAS TABLE TOP | P9030



LUIS BENCH | 3055A

L180 D50 H40  
70.9" 19.7" 15.8"

# Custom orders

We offer to produce our ICONS & Originals collections, seen on page 106-111, in the colors below. Be aware of minimum quantities and additional delivery time. Our standard models are found on the previous pages. Please contact us for inquiries or if you have any questions.

U - NATURAL



C - CHERRY



A - ANTIQUE



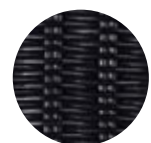
T - TAUPE



S - BLACK



CU - NATURAL



CS - BLACK



ISABELL ARMCHAIR  
9181CPWH  
W54 D57 H92 SH45 AH64  
21.3" 22.5" 36.3" 17.8" 25.2"  
☒ ☐



ISABELL ARMCHAIR  
9181WHCP  
W54 D57 H92 SH45 AH64  
21.3" 22.5" 36.3" 17.8" 25.2"  
☒ ☐



ISABELL ARMCHAIR  
9181CIVHN  
W54 D57 H92 SH45 AH64  
21.3" 22.5" 36.3" 17.8" 25.2"  
☒ ☐



ISABELL ARMCHAIR  
9181CIVGR  
W54 D57 H92 SH45 AH64  
21.3" 22.5" 36.3" 17.8" 25.2"  
☒ ☐



ISABELL SIDE CHAIR  
9180CPWH  
W51 D59 H92 SH45  
20.1" 23.3" 36.3" 17.8"  
☐



ISABELL SIDE CHAIR  
9180WHCP  
W51 D59 H92 SH45  
20.1" 23.3" 36.3" 17.8"  
☐



MONIQUE ARMCHAIR  
9186CPWH  
W54 D62 H93 SH46 AH65  
21.3" 24.5" 36.7" 18.2" 25.6"  
☐



MONIQUE CHAIR  
9185CPWH  
W54 D62 H93 SH46  
21.3" 24.5" 36.7" 18.2"  
☐



MADELEINE CHAIR  
9187CPWH  
W60 D62 H80 SH45 AH68  
23.7" 24.5" 31.5" 17.8" 26.8"  
☒ ☐



MADELEINE CHAIR  
9187WHCP  
W60 D62 H80 SH45 AH68  
23.7" 24.5" 31.5" 17.8" 26.8"  
☒ ☐



MADELEINE CHAIR  
9187BLBL  
W60 D62 H80 SH45 AH68  
23.7" 24.5" 31.5" 17.8" 26.8"  
☒ ☐



MADELEINE CHAIR  
9187CIVCP  
W60 D62 H80 SH45 AH68  
23.7" 24.5" 31.5" 17.8" 26.8"  
☒ ☐



SIMONE BAR STOOL  
9184  
D54 H78  
21.3" 30.8"  
☒ ☐ ☒



SIMONE COUNTER STOOL  
9183  
D53 H68  
20.9" 26.8"  
☒ ☐ ☒



SIMONE STOOL  
9182  
D52 H45  
20.5" 17.8"  
☒ ☐ ☒



SIMONE BAR STOOL  
9184SIVHN  
D54 H78  
21.3" 30.8"  
☒ ☐ ☒



SIMONE COUNTER STOOL  
9183SIVHN  
D53 H68  
20.9" 26.8"  
☒ ☐ ☒



SIMONE STOOL  
9182SIVHN  
D52 H45  
20.5" 17.8"  
☒ ☐ ☒



SOFIE CHAIR  
9166WHLU  
W50 D61 H89 SH46  
19.7" 24.9" 35.1" 18.2"  
☒



SOFIE CHAIR  
9166WHSG  
W50 D61 H89 SH46  
19.7" 24.9" 35.1" 18.2"  
☒



SOFIE CHAIR  
9166WHGR  
W50 D61 H89 SH46  
19.7" 24.9" 35.1" 18.2"  
☒



SOFIE CHAIR  
9166SIVGR  
W50 D61 H89 SH46  
19.7" 24.9" 35.1" 18.2"  
☒



SOFIE CHAIR  
9166SIVHN  
W50 D61 H89 SH46  
19.7" 24.9" 35.1" 18.2"  
☒



SOFIE CHAIR  
9166SIVCP  
W50 D61 H89 SH46  
19.7" 24.9" 35.1" 18.2"  
☒



SOFIE CHAIR  
9166BLBL  
W50 D61 H89 SH46  
19.7" 24.9" 35.1" 18.2"  
☒



BISTRO CHAIR  
FA-10-BLIV  
W52 D60 H85 SH46 AH66  
20.5" 23.7" 33.5" 18.2" 26"  
☒



ISABELL BAR STOOL  
9178CPWH  
W55 D61 H122 SH76  
21.7" 24.1" 48.1" 30"  
☒ ☐



# Colors

We offer to produce our Affaire bistro furniture in your combination of colors. Be aware of minimum quantities and time of delivery. See the standard models in stock to the left.

## WEAVING COMBINATIONS



WHITE | CAPPUCCINO DOT  
CPWH



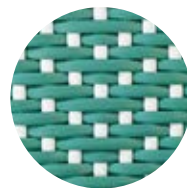
GREY | WHITE DOT  
WHGR



CAPPUCCINO | WHITE DOT  
WHCP



NAVY BLUE | WHITE DOT  
WHLU



SALVIE GREEN | WHITE DOT  
WHSG



BLACK  
BLBL



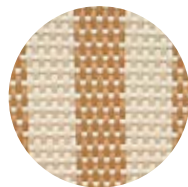
CHEVRON  
IVORY | HONEY  
CIVHN



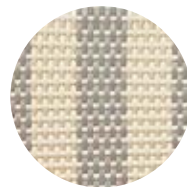
CHEVRON  
IVORY | GREY  
CIVGR



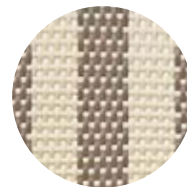
CHEVRON  
IVORY | CAPPUCCINO  
CIVCP



STRIPED  
IVORY | HONEY  
SIVHN



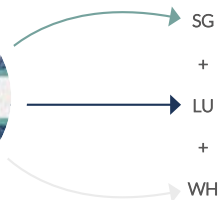
STRIPED  
IVORY | GREY  
SIVGR



STRIPED  
IVORY | CAPPUCCINO  
SIVCP

## STARWEAVE

Starweave seen to the right is a combination of three colors. We base the color code starting with the color that appears the least in the weave.



WHITE BASE, NAVY BLUE LINES W/ SALVIE WEAVE  
SGLUWH

## FRAMES

WH - WHITE



IV - IVORY



HN - HONEY



GR - GREY



CP - CAPPUCCINO



SG - SALVIE GREEN



LU - NAVY BLUE



BL - BLACK





LUCAS TABLE | 9477D  
L300 D100 H73  
118.2" 39.4" 28.8"



LUCAS TABLE | 9444D  
L240 D100 H73  
94.5" 39.4" 28.8"



LUCAS TABLE | 9472D  
L180 D100 H73  
70.9" 39.4" 28.8"



AKSELEL CAFÉ TABLE | 9456D  
W120 D120 H73  
47.3" 47.3" 28.8"



LUCAS DESK | 9470D  
L110 D60 H73  
43.4" 23.7" 28.8"



LUCAS BENCH | 9222D  
L100 D26 H45  
39.4" 10.3" 17.8"



AKSELEL COFFEE TABLE | 9453D  
W75 D75 H51  
29.6" 29.6" 20.1"



ALFRED COFFEE TABLE | 9467D  
W60 D60 H40  
23.7" 23.7" 15.8"



ALFRED COFFEE TABLE | 9462D  
W140 D55 H40  
55.2" 21.7" 15.8"



CHARLES COUNTER STOOL | 1054D  
W50 D41 H68  
19.7" 16.2" 26.8"



CHARLES STOOL | 1053D  
W48 D37 H49  
18.9" 14.6" 19.3"



ROGER STOOL | 9125U  
W40 D40 H51  
15.8" 15.8" 20.1"

# Materials & maintenance

## INDOOR FURNITURE



### RATTAN

Rattan is a natural material that is solid in opposition to hollow bamboo. Our rattan is of the highest quality, we only use the two sorts Tohiti and Manau. Rattan is nearly impossible to wear out and with proper care it can last for many generations. Rattan is recommended for indoor use and covered areas outdoor. If rattan is exposed to rain, it will turn grey and affect the durability.

**MAINTENANCE:** Rattan requires no maintenance but can be wiped with a lightly dampened cloth if needed.



### ARTFIBRE®

ArtFibre® is used in combination with rattan in our Affaire collection. Our ArtFibre® is made of dyed hard-wearing polyethylene, and is temperature and UV-resistant. ArtFibre® is flexible and provides optimal comfort when woven. It has a strong structure that can maintain its shape for years on end.

**MAINTENANCE:** ArtFibre® requires no maintenance. It can be washed with a damp cloth if needed.



### TEAK TABLES & TOPS

Our indoor teak products are made from reclaimed teak, which gives the furniture a rustic look as it appears with reparations and fillings. Reclaimed teak is collected from old houses, boats, and railroads giving each furniture a unique story. All our teak products are labeled Indonesian Legal Wood and is SVLK certified.

**MAINTENANCE:** Indoor teak requires no maintenance if you wish to achieve a vintage look. If you prefer to maintain the uniform color, it can be treated with oil. For daily cleaning, wipe with a lightly dampened cloth.

# Upholstery and cushions

The quality of good craftsmanship is also felt in our cushions. Since the 1950s we have developed customized cushions for all our models in our own facility in Denmark. Therefore, we draw on great experience and expertise when deciding the shape and characteristics of each cushion.

Our upholstery and seat cushions can be chosen from a broad variety of high-quality fabrics and styles. An updated selection of our own fabrics can be found on our website.

## Custom fabric

We also offer custom cushions using the customer's own fabric. An example of custom fabrics can be seen on page 40, 59, 83 & 117. The used fabrics are from Liberty Fabrics available at [libertyfabric.com](http://libertyfabric.com).





# Environmental responsibilities

As a manufacturer of furniture, we believe that our greatest positive impact is done by creating furniture in a quality and design that can last for generations, and thereby eliminate the need for frequent replacements.

For several years we have worked systematically with making responsible changes. Consideration for the environment affects which models we put into production as well as our choice of materials, how they are processed, and how the furniture is packaged and transported.

## A continuous process

We produce all our furniture in Indonesia. We do this because 80% of the world's rattan resources grow in the Indonesian rainforest, and we therefore have the closest possible access to the best raw materials. In our production, we are very focused on avoiding waste. We do this because it is common sense, but also because it is an unavoidable part of Indonesian culture.

Our furniture is shipped directly from Indonesia to large export markets. This way we avoid that our furniture ends up on a double journey to and from Denmark. By shipping direct, we are able to reduce transport time as well as our carbon footprint.

Since 2013, we have been certified by ISO14001. Through this certification, we have committed ourselves to a responsible environmental policy as well as an ongoing focus on exploring new possible ways to develop and improve our business.





# Our social responsibility

We are SMETA-certified and have worked systematically with social responsibility since 2013. A SMETA certification does not have a natural expiry date, but we have chosen to be re-certified every two years to ensure our employees working environment and to continuously keep ourselves up to date on possible improvements.

Our own factory, as well as our other business partners, are regularly audited. For all facilities, we have the same demands, namely that they must be managed in an environmentally and socially responsible manner - and we continuously improve in all areas.

Read more about our certifications and commitments below.



We are a part of the UN Global Compact. This is a voluntary commitment to implement universal sustainability initiatives based on 10 principles in the areas of human rights, labor, environment, and anti-corruption.



Sika-Design is certified ISO 14001:2015 by DNV-GL. This international standard sets a framework for us to continuously protect the environment and respond to changing environmental conditions in balance with socio-economic needs.



Sika-Design is audited by DNV-GL: SMETA (Sedex Members Ethical Trade Audit). This is the world's most commonly used ethical audit format and helps us on a continuous basis to ensure labor standards, health and safety for the employees in our supply chain.



As a manufacturer of furniture, we believe that our greatest impact comes from addressing UN Sustainable Development goals no. 8 and 12. By working systematically with ensuring a responsible consumption and production we work towards a better future.



## Sika-Design A/S

Rynkebyvej 245  
DK-5350 Rynkeby

+45 6615 4224  
info@sika-design.com  
www.sika-design.com  
@sikadesign